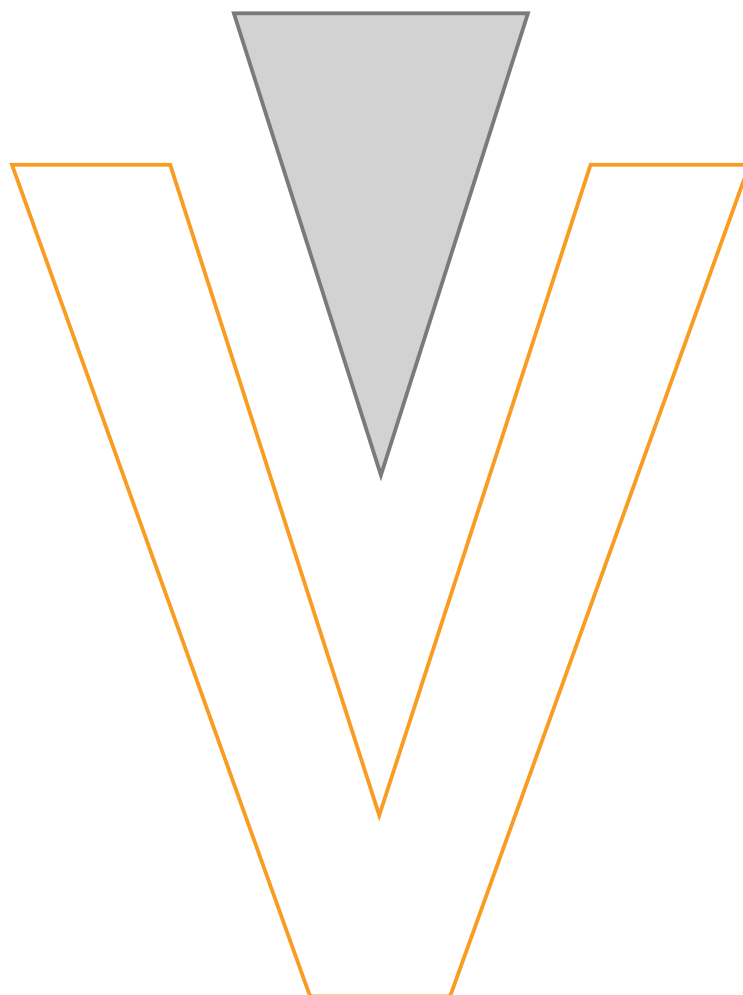
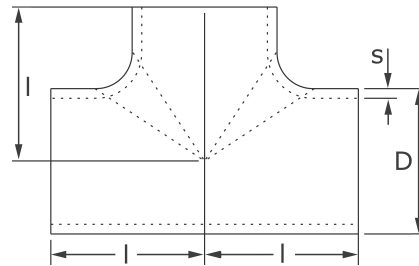


Product Sheet



T-piece, welded EN 10253-4/A

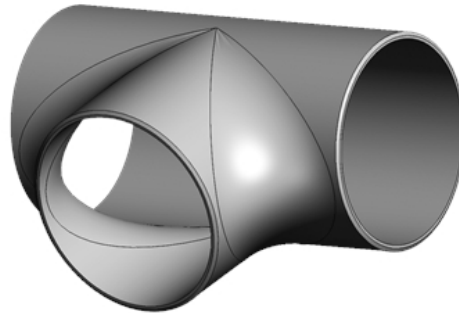
made of stainless steel



| D | s | h | L | l | kg | Art.-Nr. |
|-------|-----|-----|-----|-----|-------|------------|
| 21,3 | 2,0 | 25 | 50 | 25 | 0,090 | TP-021-020 |
| 26,9 | 2,0 | 29 | 58 | 29 | 0,100 | TP-026-020 |
| 26,9 | 2,6 | 29 | 58 | 29 | 0,130 | TP-026-026 |
| 33,7 | 2,0 | 38 | 76 | 38 | 0,220 | TP-033-020 |
| 33,7 | 2,6 | 38 | 76 | 38 | 0,220 | TP-033-026 |
| 42,4 | 2,0 | 48 | 96 | 48 | 0,300 | TP-042-020 |
| 42,4 | 2,6 | 48 | 96 | 48 | 0,360 | TP-042-026 |
| 48,3 | 2,0 | 57 | 114 | 57 | 0,530 | TP-048-020 |
| 48,3 | 2,6 | 57 | 114 | 57 | 0,570 | TP-048-026 |
| 60,3 | 2,0 | 64 | 128 | 64 | 0,670 | TP-060-020 |
| 60,3 | 2,6 | 64 | 128 | 64 | 0,700 | TP-060-026 |
| 60,3 | 2,9 | 64 | 128 | 64 | 0,770 | TP-060-029 |
| 76,1 | 2,0 | 76 | 152 | 76 | 0,920 | TP-076-020 |
| 76,1 | 2,3 | 76 | 152 | 76 | 1,060 | TP-076-023 |
| 76,1 | 2,6 | 76 | 152 | 76 | 1,320 | TP-076-026 |
| 76,1 | 2,9 | 76 | 152 | 76 | 1,410 | TP-076-029 |
| 88,9 | 2,0 | 86 | 172 | 86 | 1,170 | TP-088-020 |
| 88,9 | 2,3 | 86 | 172 | 86 | 1,320 | TP-088-023 |
| 88,9 | 2,5 | 86 | 172 | 86 | 1,430 | TP-088-025 |
| 88,9 | 2,6 | 86 | 172 | 86 | 1,480 | TP-088-026 |
| 88,9 | 3,0 | 86 | 172 | 86 | 1,640 | TP-088-030 |
| 114,3 | 2,0 | 105 | 210 | 105 | 2,000 | TP-114-020 |
| 114,3 | 2,6 | 105 | 210 | 105 | 2,300 | TP-114-026 |
| 114,3 | 3,0 | 105 | 210 | 105 | 2,800 | TP-114-030 |
| 139,7 | 2,6 | 124 | 248 | 124 | 3,200 | TP-139-026 |
| 139,7 | 3,0 | 124 | 248 | 124 | 4,500 | TP-139-030 |
| 168,3 | 2,6 | 143 | 286 | 143 | 4,600 | TP-168-026 |
| 168,3 | 3,0 | 143 | 286 | 143 | 5,920 | TP-168-030 |
| 219,1 | 3,0 | 178 | 356 | 178 | 8,900 | TP-219-030 |

available material: 1.4307, 1.4541, 1.4571

Tees & Saddles > equal t-piece > EN 10253-4/A



T-piece with equal branch

EN 10253-4 (alt DIN 2615-W)

Feature

Design A (same wall thickness at the welding end and fitting body)

w (welded) - made from welded pipes acc. EN 10217-7

cold formend (pressed or drawn)

solution heat treatment/annealed

surface pickled

materials 1.4307/304L - 1.4541 - 1.4571 - 1.4404/316L

certificate acc. EN 10204/3.1

Design pressure

| Dimension (D) | Thickness (s) | Design pressure |
|---------------|---------------|-----------------|
| 17,2 mm | 1,6 mm | 62 bar |
| 21,3 mm | 2,0 mm | 64 bar |
| 26,9 mm | 2,0 mm | 55 bar |
| 33,7 mm | 2,0 mm | 40 bar |
| 42,4 mm | 2,0 mm | 37 bar |
| 48,3 mm | 2,0 mm | 29 bar |
| 60,3 mm | 2,0 mm | 21 bar |
| 76,1 mm | 2,0 mm | 19 bar |
| 88,9 mm | 2,0 mm | 17 bar |
| 114,3 mm | 2,0 mm | 12 bar |
| 114,3 mm | 2,6 mm | 18 bar |
| 114,3 mm | 2,9 mm | 27 bar |
| 139,7 mm | 2,6 mm | 14 bar |
| 168,3 mm | 2,6 mm | 8 bar |
| 168,3 mm | 3,0 mm | 12 bar |
| 219,1 mm | 3,0 mm | 8 bar |
| 273,0 mm | 3,0 mm | 5 bar |

The design pressure was determined for the material 1.4307 at +20°C acc. EN 10253/ Bauart A

Tolerances

Tolerance limits for the wall thickness [s]

-12 % / +15 %

Tolerance limits for diameter [D]

+/- 1,0 % oder +/- 0,5 mm, es gilt der jeweils höhere Wert (EN Toleranzklasse D2)

Tolerance limits for overall dimensions [l]

≤ 219,1 = ± 2 mm

≤ 406,4 = ± 5 mm

Tolerance limits for the fitting geometry [X]

X = 1 % of the outside diameter or 1mm, whichever value is higher

